



AIM
LEARN FAST™

SEMINAR SERIES

BRINGING DATA SUPPORT AND TRAINING TO YOU

PRACTICAL DATA ACQUISITION
FOR AUTOMOTIVE RACERS & ENTHUSIASTS



www.aimsports.com

 facebook.com/aimsports
 [twitter: @aimsports](https://twitter.com/aimsports)

1.800.718.9090

Dec 2012

- **INTRODUCTIONS**
- **ABOUT AIM SPORTS**
- **WHAT IS DATA ACQUISITION**
- **WHY USE DATA ACQUISITION**
- **HOW TO USE DATA ACQUISITION**

— **RACE STUDIO 2 SOFTWARE**

- **SETUP AND CONFIGURATION**
- **DETAILED DATA ANALYSIS**
- **SMARTYCAM VIDEO**

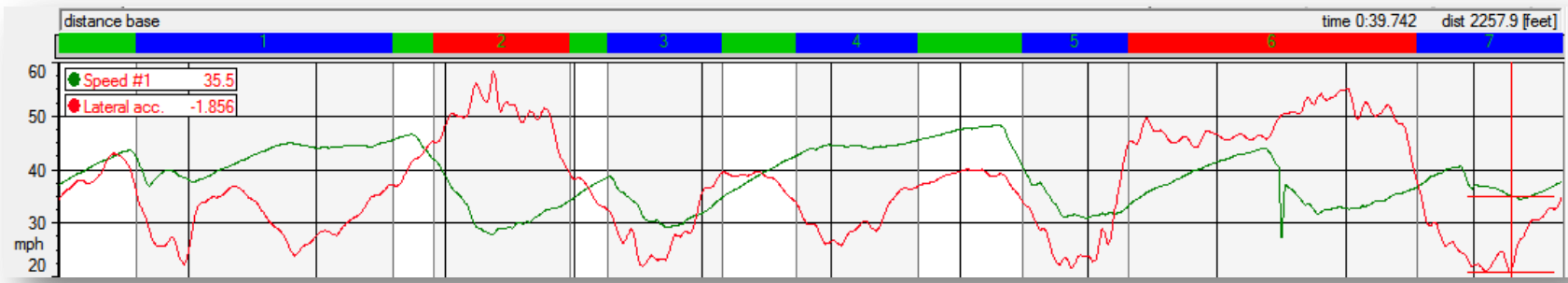


TODAYS AGENDA

WHAT IS OUR PLAN FOR TODAY?



- **YOUR NAME**
- **RACING BACKGROUND\EXPERIENCE**
- **TYPE OF VEHICLE(S) YOU CURRENTLY RUN**
- **DATA ACQUISITION EXPERIENCE**
- **WHAT DATA SYSTEM DO YOU USE**
- **YOUR HIGHEST EXPECTATION FOR TODAY'S SEMINAR**



- **AIM SPORTS, LLC**

- **AIM SPORTS IS THE WORLD LEADER IN MOTOR SPORTS AND RACE DATA ACQUISITION TECHNOLOGY, ELECTRONICS, INSTRUMENTATION, DATA LOGGERS, DIGITAL DISPLAYS, LAP TIMERS, STOPWATCHES AND GAUGES FOR HIGH PERFORMANCE AND RACE VEHICLES**
- **MANY AIM PRODUCTS COMBINE THE FUNCTIONS OF TRADITIONAL TACHOMETER, SPEEDOMETER, TEMPERATURE GAUGE, PRESSURE GAUGE AND LAP TIMER ALL INTO ONE COMPACT, HIGH PERFORMANCE UNIT**
- **OPENED IN 1996 IN LAKE ELSINORE, CA AND OPENED IN ROANOKE, VA IN 2002**

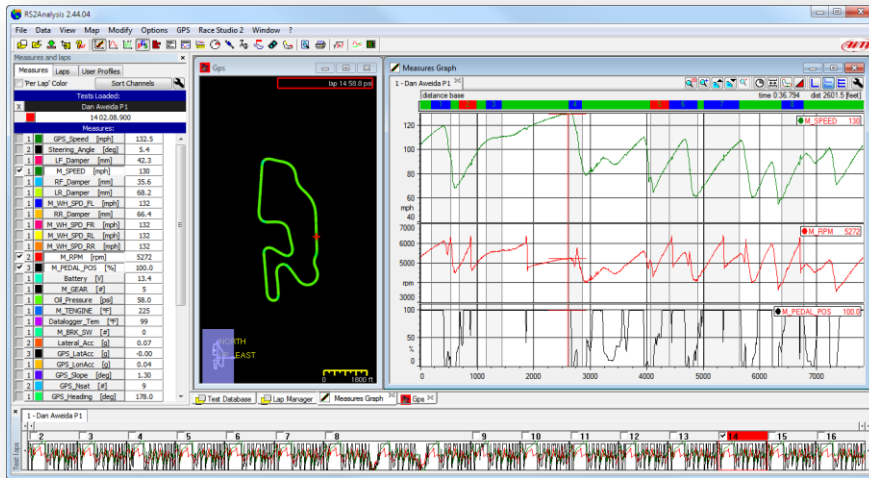
AIM SPORTS LLC
31889 CORYDON, SUITE 130
LAKE ELSINORE, CA 92530
TEL: 951.674.9090
FAX: 951.674.5699



Toll Free: 1.800.718.9090
www.aimsports.com

AIM SPORTS LLC SE
1636 9TH ST SE #B
ROANOKE, VA 24013
TEL: 540.342.9680
FAX: 540.342.9682

WHAT IS DATA ACQUISITION

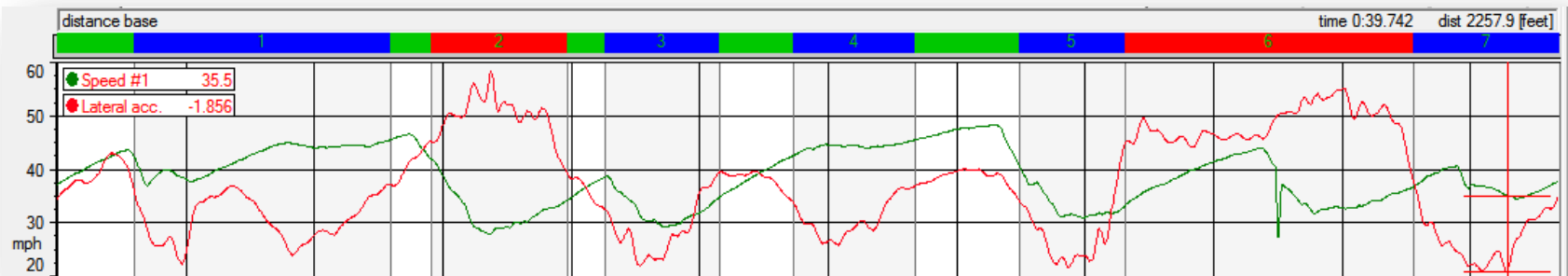
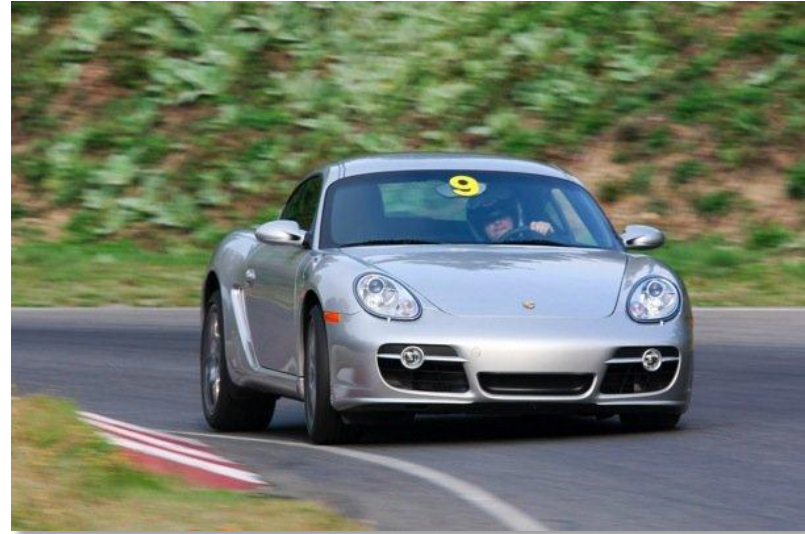


WHAT IS DATA ACQUISITION

- SEAT OF THE PANTS
- STOPWATCH
- DATA ACQUISITION SYSTEM
 - HARDWARE AND SOFTWARE



- **JUST LIKE AN ENGINE OR SHOCK DYNO, A DATA SYSTEM MEASURES AND RECORDS PERFORMANCE**
- **NOT JUST *VEHICLE* PERFORMANCE**
- **NOT JUST *DRIVER* PERFORMANCE**
- **BUT *OVERALL* PERFORMANCE!**
- **SENSORS GATHER AND HARDWARE STORES THE DYNAMICS OF WHAT THE VEHICLE IS DOING**
- **SOFTWARE MAKES THE DETAILED ANALYSIS POSSIBLE**

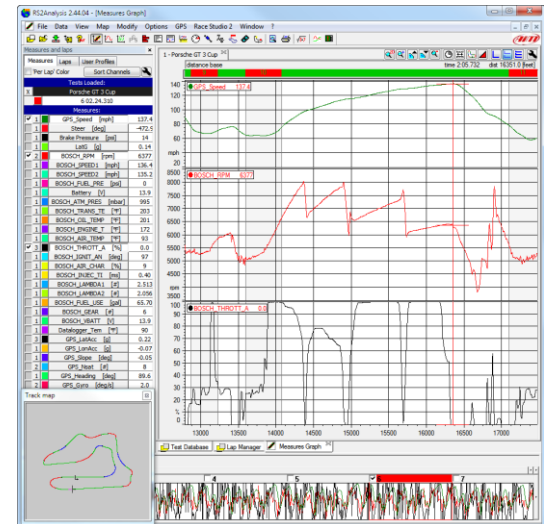


- **CONFIGURATION**

- **RACE STUDIO 2 HAS POWERFUL FUNCTIONS FOR CONFIGURING YOUR AIM SPORTS DATA SYSTEM**
- **SENSORS**
- **SAMPLING RATES**
- **ALARMS**
- **SHIFT LIGHTS**

- **DATA ANALYSIS**

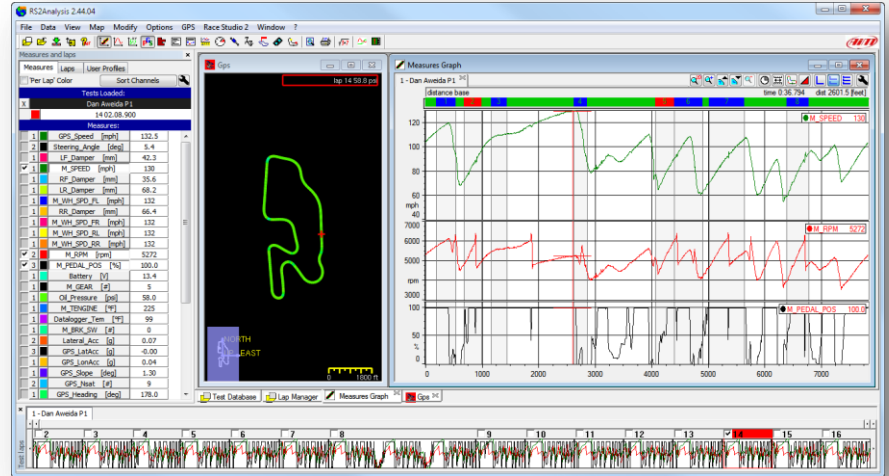
- **RACE STUDIO 2 INCLUDES THE FUNCTIONS NEEDED TO VIEW AND UNDERSTAND THE RECORDED DATA**
- **THE MAIN ANALYSIS FUNCTIONS ARE MEASURE PLOTS, MAP GENERATION, AND HISTOGRAMS**
- **THE PLOTS ARE THE MOST COMMON WAY TO ANALYZE DATA**



WHAT IS DATA ACQUISITION



HARDWARE



SOFTWARE

KNOWLEDGE!

WHY USE DATA ACQUISITION

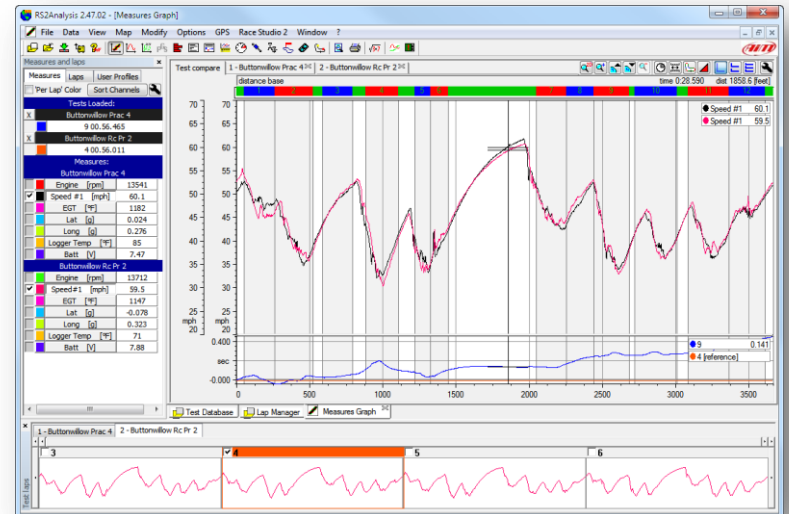
TO IMPROVE:

- **VEHICLE SPEED**
- **VEHICLE RELIABILITY**
- **DRIVER SPEED**
- **RACE VEHICLE**
- **RACE CREW**
- **RACE TEAM**



WITH PROPER AND CONSISTENT USE OF DATA, YOUR ENTIRE RACE PROGRAM WILL IMPROVE

- SPEEDS
- ENGINE RPMS
- ENGINE PRESSURES/TEMPS
- VOLTAGES
- ACCELERATION RATES
- FRICTION CIRCLE
- TIRE PRESSURES/TEMPS
- SUSPENSION TRAVEL/VELOCITY
- BRAKE BALANCE/TEMP/TIME
- AND SO MUCH MORE...



WHY USE DATA ACQUISITION?
 MONITORING AND DEVELOPING YOUR VEHICLE

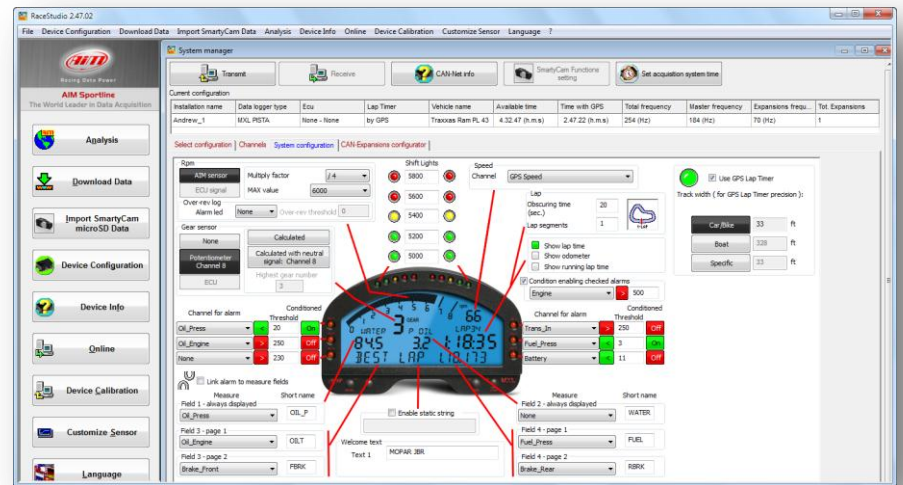
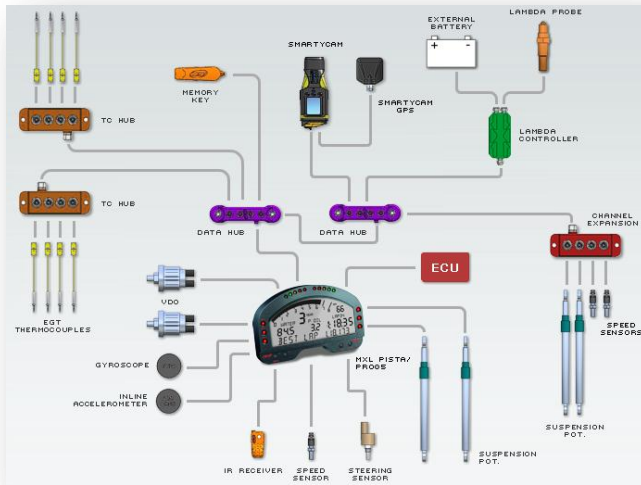


- **CHANGE DRIVING LINE**
- **DRIVE MORE AGGRESSIVE**
- **DRIVE MORE SMOOTHLY**
- **THROTTLE APPLICATION**
- **BRAKE APPLICATION**
- **DIFFERENT SHIFT POINTS**
- **DRAFTING**
- **HAND AND FEET “SPEED”**
- **COMPARE DIFFERENT DRIVERS
FOR EVEN FASTER IMPROVEMENT**




HOW TO USE DATA ACQUISITION

HARDWARE CONFIGURATION



RaceStudio 2.47.02

File Device Configuration Download Data Import SmartyCam Data Analysis Device Info Online Device Calibration Customize Sensor Language ?



Racing Data Power
AIM Sportline
The World Leader in Data Acquisition

Analysis
Download Data
Import SmartyCam microSD Data
Device Configuration
Device Info
Online
Device Calibration
Customize Sensor
Language

System manager

Transmit Receive CAN-Net info SmartyCam Functions setting Set acquisition system time

Current configuration

Installation name	Data logger type	Ecu	Lap Timer	Vehicle name	Available time	Time with GPS	Total frequency	Master frequency	Expansions frequ...	Tot. Expansions
Andrew_1	MXL PISTA	None - None	by GPS	Traxxas Ram PL 43	4.32.47 (h.m.s)	2.47.22 (h.m.s)	254 (Hz)	184 (Hz)	70 (Hz)	1

Select configuration Channels System configuration CAN-Expansions configurator

Driveshaft_rpm
Max. rpm (rpm) 6500
Pulses per wheel revolution 8

Channel identi...	Enabled/disabled	Channel name	Sampling freque...	Sensor type	Measure unit	Low scale	High scale
RPM	<input checked="" type="checkbox"/> Enabled	Engine	20 Hz	Engine revolution speed	rpm	1500	6500
SPD_1	<input checked="" type="checkbox"/> Enabled	Driveshaft_rpm	20 Hz	Revolution speed	rpm	1500	6500
CH_1	<input checked="" type="checkbox"/> Enabled	Oil_Press	10 Hz	Pressure VDO 0-10 bar	psi .1	0.0	100.0
CH_2	<input checked="" type="checkbox"/> Enabled	Oil_Engine	10 Hz	Thermoresistance PT100	°F	50	250
CH_3	<input checked="" type="checkbox"/> Enabled	Water_Out	10 Hz	Thermoresistance PT100	°F	50	250
CH_4	<input checked="" type="checkbox"/> Enabled	Trans_In	10 Hz	Thermoresistance PT100	°F	50	250
CH_5	<input checked="" type="checkbox"/> Enabled	Fuel_Press	20 Hz	Pressure VDO 0-2 bar	psi .1	0.0	15.0
CH_6	<input checked="" type="checkbox"/> Enabled	Brake_Front	20 Hz	MSI 0-2000 PSI sensor	psi	0	1000
CH_7	<input checked="" type="checkbox"/> Enabled	Brake_Rear	20 Hz	MSI 0-2000 PSI sensor	psi	0	1000
CH_8	<input checked="" type="checkbox"/> Enabled	Gear	20 Hz	Gear potentiometer	#	0	4
CALC_GEAR	<input type="checkbox"/> Disabled	Calculated_Gea	10 Hz	Calculated Gear	#	0	9
ACC_1	<input checked="" type="checkbox"/> Enabled	LatAcc	20 Hz	Lateral accelerometer	g .01	-2.00	2.00
LOG_TMP	<input checked="" type="checkbox"/> Enabled	Datalogger_Temp	2 Hz	Cold joint	°F	20	120
BATT	<input checked="" type="checkbox"/> Enabled	Battery	2 Hz	Battery	V .1	5.0	15.0

CONFIGURATION: RACE STUDIO SOFTWARE IS WHERE YOU SETUP, CONFIGURE, AND CALIBRATE YOUR DATA SYSTEM.

RaceStudio 2.47.02

File Device Configuration Download Data Import SmartyCam Data Analysis Device Info Online Device Calibration Customize Sensor Language ?

AIM
Racing Data Power
AIM Sportline
The World Leader in Data Acquisition

Analysis
Download Data
Import SmartyCam microSD Data
Device Configuration
Device Info
Online
Device Calibration
Customize Sensor
Language

System manager

Transmit Receive CAN-Net info SmartyCam Functions setting Set acquisition system time

Current configuration

Installation name	Data logger type	Ecu	Lap Timer	Vehicle name	Available time	Time with GPS	Total frequency	Master frequency	Expansions frequ...	Tot. Expansions
Andrew_1	MXL PISTA	None - None	by GPS	Traxxas Ram PL 43	4.32.47 (h.m.s)	2.47.22 (h.m.s)	254 (Hz)	184 (Hz)	70 (Hz)	1

Select configuration Channels **System configuration** CAN-Expansions configurator

Rpm
 AIM sensor Multiply factor / 4
 ECU signal MAX value 6000
 Over-rev log Alarm led None Over-rev threshold 0

Gear sensor
 None Calculated
 Potentiometer Channel 8 Calculated with neutral signal: Channel 8
 ECU Highest gear number 3

Shift Lights
 5800 5600 5400 5200 5000

Speed Channel GPS Speed

Lap
 Obscuring time (sec.) 20
 Lap segments 1
 Show lap time
 Show odometer
 Show running lap time
 Condition enabling checked alarms
 Engine 500

Track width (for GPS Lap Timer precision):
 Car/Bike 33 ft
 Boat 328 ft
 Specific 33 ft

Channel for alarm Conditioned Threshold
 Oil_Press < 20 On
 Oil_Engine > 250 Off
 None > 230 Off

Channel for alarm Conditioned Threshold
 Trans_In > 250 Off
 Fuel_Press < 3 On
 Battery < 11 Off

Link alarm to measure fields
 Measure Short name
 Field 1 - always displayed Oil_Press OIL_P
 Field 3 - page 1 Oil_Engine OILT
 Field 3 - page 2 Brake_Front FBRK

Measure Short name
 Field 2 - always displayed None WATER
 Field 4 - page 1 Fuel_Press FUEL
 Field 4 - page 2 Brake_Rear RBRK

Enable static string
 Welcome text
 Text 1 MOPAR JBR

CONFIGURATION: RACE STUDIO SOFTWARE IS WHERE YOU SETUP, CONFIGURE, AND CALIBRATE YOUR DATA SYSTEM.

RaceStudio 2.47.02

File Device Configuration Download Data Import SmartyCam Data Analysis Device Info Online Device Calibration Customize Sensor Language ?

AIM
Racing Data Power
AIM Sportline
The World Leader in Data Acquisition

Analysis

Download Data

Import SmartyCam microSD Data

Device Configuration

Device Info

Online

Device Calibration

Customize Sensor

Language

System manager

Transmit Receive CAN-Net info SmartyCam Functions setting Set acquisition system time

Current configuration

Installation name	Data logger type	Ecu	Lap Timer	Vehicle name	Available time	Time with GPS	Total frequency	Master frequency	Expansions frequ...	Tot. Expansions
Andrew_1	MXL PISTA	None - None	by GPS	Traxxas Ram PL 43	4.32.47 (h.m.s)	2.47.22 (h.m.s)	254 (Hz)	184 (Hz)	70 (Hz)	1

Select configuration | Channels | System configuration | **CAN-Expansions configurator**

Add Expansion Del. Expansion

CHX1 - Channels Expansion

Name of expansion configuration (6 characters max.) CHX1

Serial number of expansion (S.N.) 2000659

Get serial number from a connected expansion

Enabled/disabled	Channel name	Sampling frequen...	Sensor type	Measure unit	Low scale	High scale
<input checked="" type="checkbox"/> Enabled	Throttle	20 Hz	Zero based potentiometer	% .1	0.0	105.0
<input checked="" type="checkbox"/> Enabled	Trans_Out	10 Hz	Thermoresistance PT100	*F	50	250
<input checked="" type="checkbox"/> Enabled	Steering	20 Hz	Mid zero potentiometer	deg .1	-180.0	180.0
<input checked="" type="checkbox"/> Enabled	Gyro	20 Hz	Gyro	deg/s	-90	90

CONFIGURATION: RACE STUDIO SOFTWARE IS WHERE YOU SETUP, CONFIGURE, AND CALIBRATE YOUR DATA SYSTEM.

RaceStudio 2.47.02

File Device Configuration Download Data Import SmartyCam Data Analysis Device Info Online Device Calibration Customize Sensor Language ?

AIM
Racing Data Power
AIM Sportline
The World Leader in Data Acquisition

Analysis
Download Data
Import SmartyCam microSD Data
Device Configuration
Device Info
Online
Device Calibration
Customize Sensor
Language

System manager

Transmit Receive CAN-Net info SmartyCam Functions Set acquisition system time

Current configuration

Installation name	Data logger type	Ecu	Lap Timer
Andrew_1	MXL PISTA	None - None	by GPS

Select configuration Channels System configuration CAN-Expansions config

Add Expansion Del. Expansion

CHX1 - Channels Expansion

Name of expansion configuration (6 characters max.) CHX1
Serial number of expansion (S.N.) 2000659

Enabled/disabled	Channel name
<input checked="" type="checkbox"/> Enabled	Throttle
<input checked="" type="checkbox"/> Enabled	Trans_Out
<input checked="" type="checkbox"/> Enabled	Steering
<input checked="" type="checkbox"/> Enabled	Gyro

Add expansion configuration

Select the expansion type

CHANNEL EXPANSION LCU-ONE LCU-ONE CAN

Channels Expansion LCU-ONE (CAN only or CAN + analog output) LCU-ONE CAN (CAN only)

TC HUB (4 thermocouple expansion)

Name of expansion configuration (6 characters max.)
EXP

Serial number of the expansion (S.N.)
Get serial number from a connected expansion

OK Cancel

CONFIGURATION: RACE STUDIO SOFTWARE IS WHERE YOU SETUP, CONFIGURE, AND CALIBRATE YOUR DATA SYSTEM.

CURRENT SOFTWARE/FIRMWARE

- **SOFTWARE**

- **RACE STUDIO 2 - 02.47.02** (08/29/12)
- **GPS MANAGER - 02.02.02** (08/29/12)
- **SMARTY MANAGER - 01.08.02** (08/29/12)

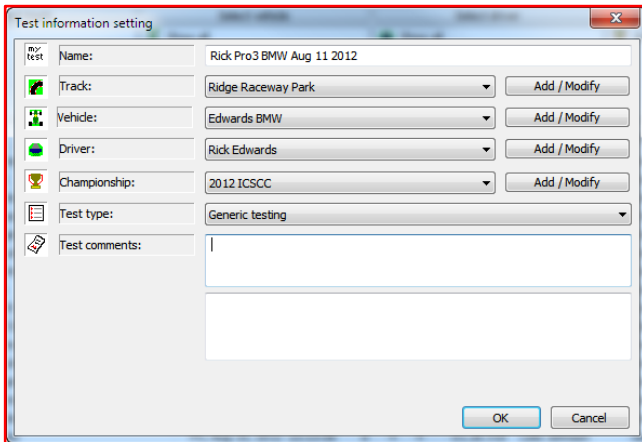


- **FIRMWARE**

- **FIRMUP ALL - 120926** (09/26/12)
 - **MXL - 14.86.60** (09/14/12)
 - **EV04 - 43.04.04** (09/07/12)
 - **ECU BRIDGE - 45.01.12** (05/22/12)
 - **GPS - 35.29** (07/07/11)
 - **LAMBDA - 25.11** (01/09/08)
 - **CHANNEL EXPANSION - 40.15** (07/20/12)
- **SOLO/SOLO DL - 46.03.06** (07/24/12)
- **SMARTYCAM - 01.03.10** (11/22/11)

ORGANIZING DATA

- **RS2 SOFTWARE IS VERY FLEXIBLE**
 - **STORE DATA IN THE DEFAULT LOCATION**
 - **C:\AIM_SPORT\RACESTUDIO02\DATA**
 - **USE THE “SELECTION CRITERIA” FUNCTION**
 - **FULL USE OF THE TEST INFORMATION BOX IS IMPORTANT**



C:\AIM_SPORT\RACESTUDIO02\

Name	Date modified	Type	Size
AIM_USB_DRIVER_2008	9/11/2012 9:05 AM	File folder	
CFG	9/11/2012 9:05 AM	File folder	
CFGVE3	9/11/2012 9:05 AM	File folder	
CONTACT_US	9/11/2012 9:05 AM	File folder	
DATA	9/11/2012 9:30 AM	File folder	
DATABASE	9/11/2012 9:18 AM	File folder	
DWL	6/13/2012 2:46 PM	File folder	
ECU_DRIVER_BUILDER_EXAMPLES	3/13/2010 3:16 PM	File folder	
ECU_DRIVER_BUILDER_FILES	2/15/2010 2:22 PM	File folder	
ETpred	1/17/2010 12:57 PM	File folder	
HELP	7/1/2011 10:57 PM	File folder	
InstalledTracks	10/25/2011 4:36 PM	File folder	
LANGUAGES	9/11/2012 9:18 AM	File folder	
lib	4/24/2012 4:59 PM	File folder	
MATHCHANNELS	9/11/2012 9:18 AM	File folder	
PROFILES	7/17/2012 12:10 PM	File folder	
Resources	1/17/2010 12:48 PM	File folder	
RSIMG	9/11/2012 9:05 AM	File folder	
TRACKS	9/11/2012 9:05 AM	File folder	
USB_DRIVER_98ME	4/24/2012 4:59 PM	File folder	
UserSettings	1/17/2010 12:50 PM	File folder	
_VISTA_Imported.aim	1/17/2010 12:52 PM	AIM File	1 KB
CheckApplications.exe	12/9/2010 11:22 AM	Application	12 KB
CpOnlyIfNotExists.exe	7/12/2011 9:16 AM	Application	8 KB
Download.exe	8/29/2012 1:09 PM	Application	2,223 KB
Download_660.exe	9/1/2005 3:52 PM	Application	1,312 KB
ECU Driver Builder.exe	2/15/2010 12:32 PM	Application	124 KB
ProgressCtrl.exe	6/1/2005 11:39 AM	Application	252 KB
RaceStudio2.exe	8/29/2012 1:09 PM	Application	24,043 KB
RS2Analysis.exe	8/29/2012 1:09 PM	Application	5,879 KB

ORGANIZING DATA

- **SELECTION CRITERIA**

- IF YOU HAVE USED THE TEST INFORMATION BOX , THE SELECTION CRITERIA FUNCTION IS VERY POWERFUL
- EDITING THE TEST INFORMATION SETTINGS IS POSSIBLE AT ANY TIME

Test information setting

my test Name: Rick Pro3 BMW Aug 11 2012

Track: Ridge Raceway Park Add / Modify

Vehicle: Edwards BMW Add / Modify

Driver: Rick Edwards Add / Modify

Championship: 2012 ICSCC Add / Modify

Test type: Generic testing

Test comments:

OK Cancel

RS2Analysis 2.47.02 - [Test database and Lap manager]

File Data View Map Modify Options GPS Race Studio 2 Window ?

Measures and laps

Measures Laps User Profiles

Test database

Use selection criteria

Select track Select vehicle Select driver Select championship Select test type

Show all Show all Show all Show all

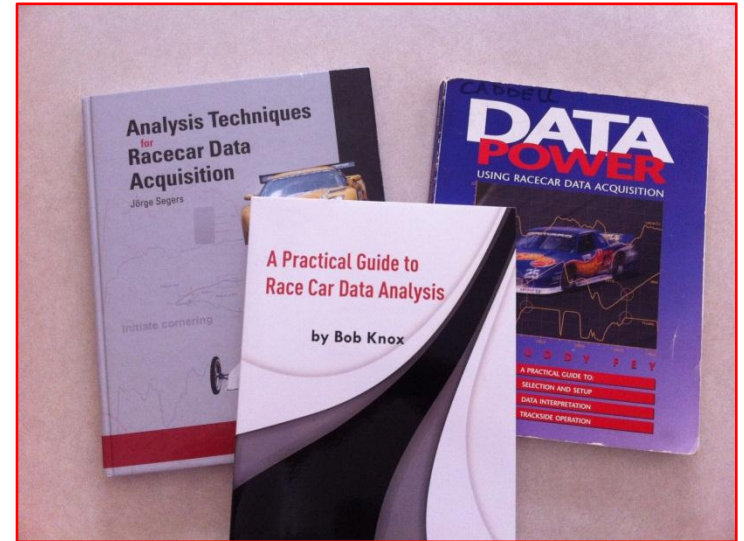
Test name	Test date	N...	...	Best laptime	Driver	Test type	Vehicle	
Carlo Pro3 BMW Aug 11 2012	Sat, Aug 11, 2012 18:29:30	18	15	1	01.56.775	Carlo Sparacio	Generic testing	Edwards BM
Rick Pro3 BMW Aug 11 2012	Sat, Aug 11, 2012 17:59:34	13	10	1	01.57.318	Rick Edwards	Generic testing	Edwards BM
Mark LaCombe944 Cup_1928072012	Sat, Jul 28, 2012 10:39:05	10	5	1	02.02.212	Mark LaCombe	Practice 1	944 Cup #1

Open test Close test Test properties Import test Remove test Export test

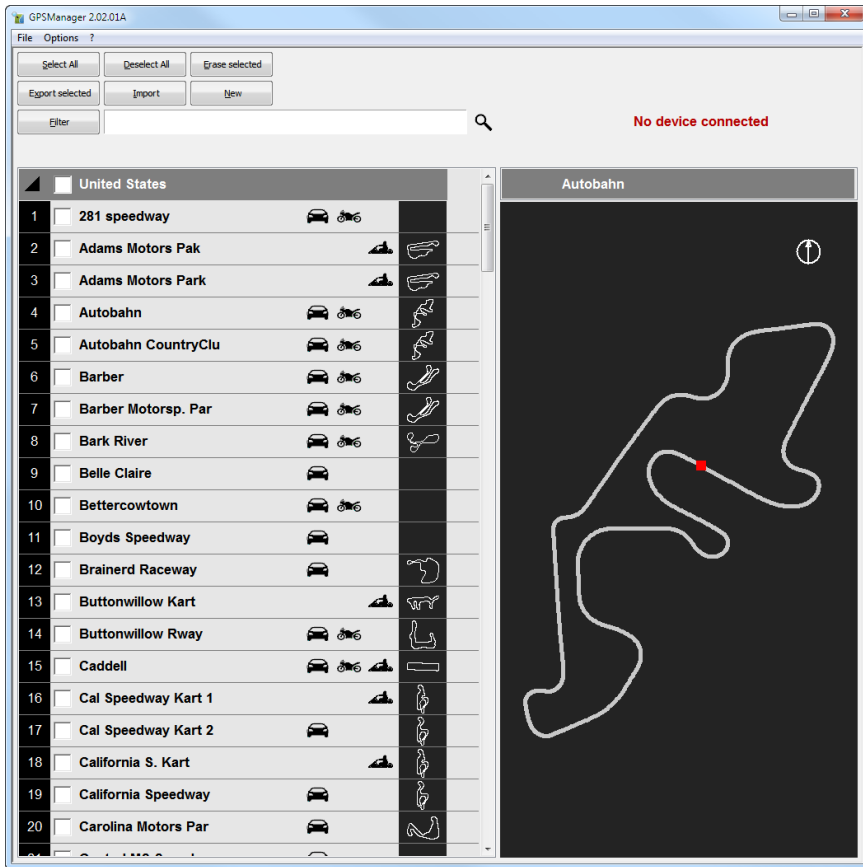
Test Database

REFERENCE MATERIALS

- **SEVERAL GOOD BOOKS ARE AVAILABLE**
 - **A PRACTICAL GUIDE TO RACE CAR DATA ANALYSIS**
BOB KNOX (2011)
 - **COMPETITION CAR DATA LOGGING: A PRACTICAL HANDBOOK**
SIMON MCBEATH (2009)
 - **ANALYSIS TECHNIQUES FOR RACECAR DATA ACQUISITION**
JORGE SEGERS (2008)
 - **THE COMPETITION CAR DATA LOGGING MANUAL**
GRAHAM TEMPLEMAN (2008)
 - **DATA POWER; USING RACECAR DATA ACQUISITION**
BUDDY FEY (1993)



JUST A FEW, MORE ARE AVAILABLE!



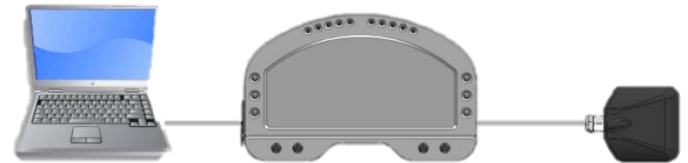
GPS MANAGER IS SOFTWARE THAT YOU USE TO TAKE FULL ADVANTAGE OF THE AIM SPORTS GPS TECHNOLOGY WITH START/FINISH COORDINATES, SPLIT POSITIONS AND THE ABILITY TO IMPORT/EXPORT THEM QUICKLY AND EASILY.

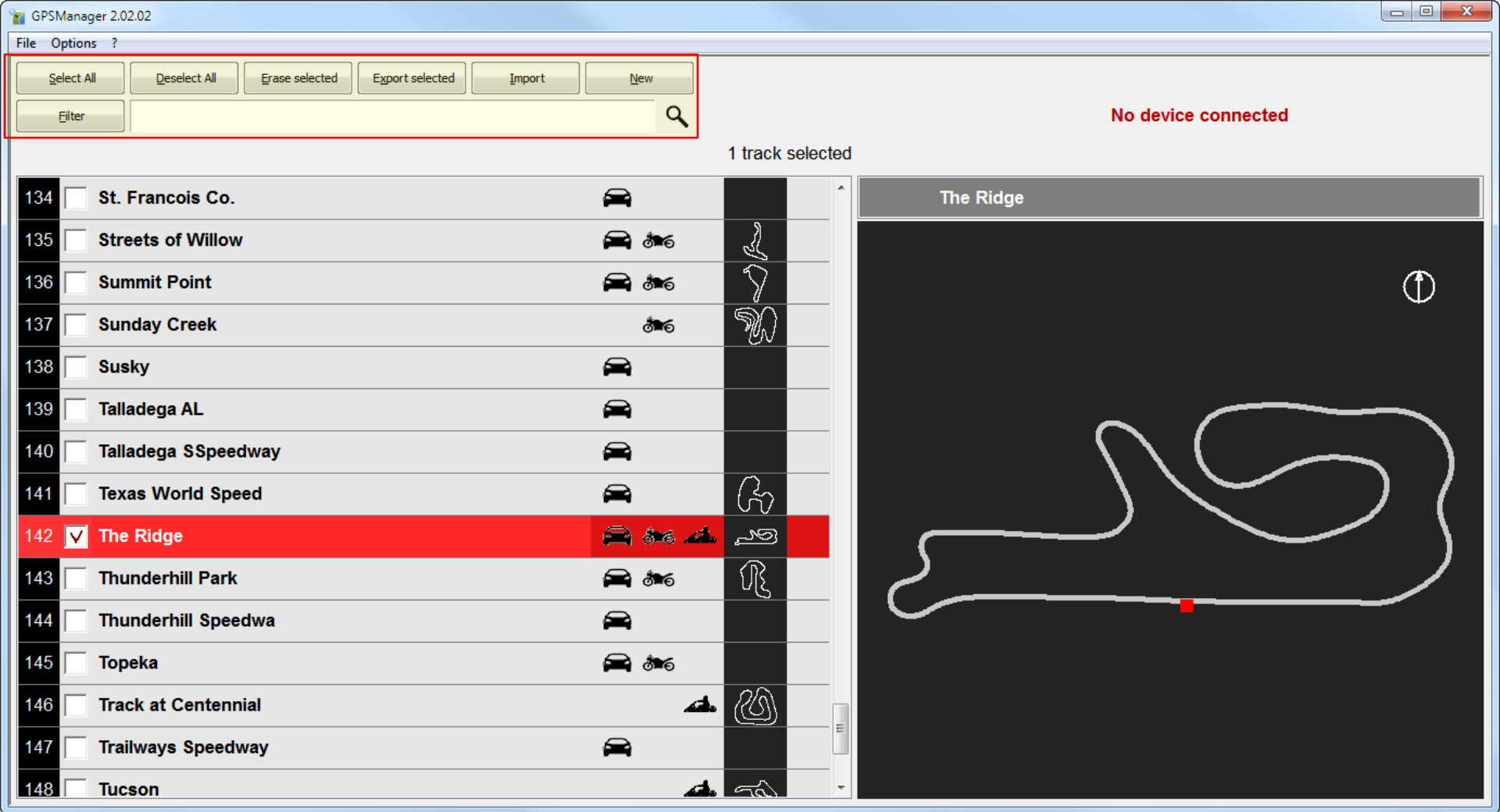


SMARTYMANAGER IS SOFTWARE SPECIFICALLY DESIGNED AND DEVELOPED TO CONFIGURE YOUR SMARTYCAM AND ALLOW CUSTOMIZING THE APPEARANCE OF THEIR DATA AND VIDEO INTEGRATION.

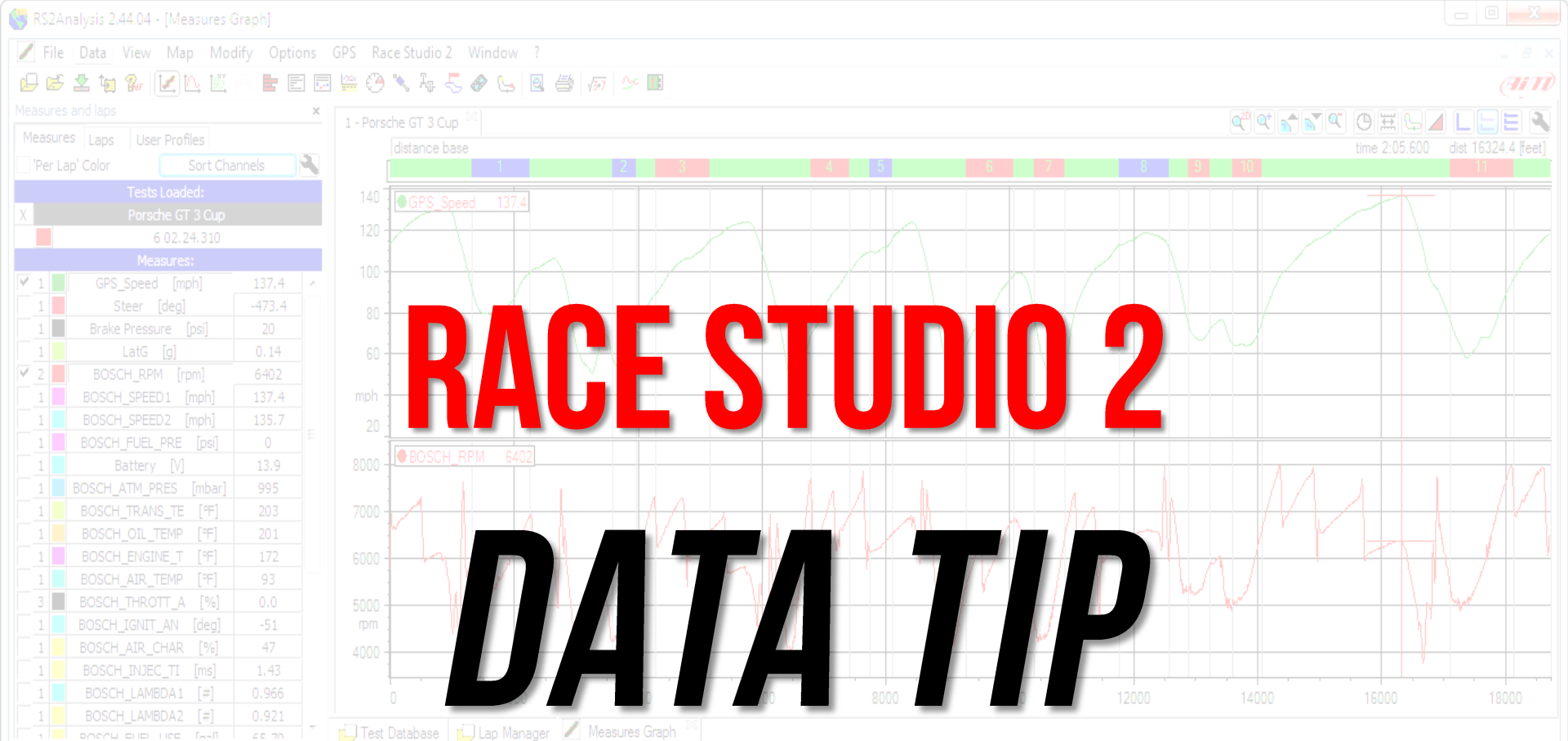
GPS MANAGER

- **MAKES USING THE AIM GPS SENSOR EASIER**
 - **HUGE DATABASE OF THE WORLDS TRACKS**
 - **EASY FOR THE USER TO ADD TRACKS**
 - **STRONG EXPORT/IMPORT FUNCTIONS**
 - **POWERFUL FILTER CAPABILITIES**
 - **WORKS SEAMLESSLY WITH RACE STUDIO 2 AND SMARTY MANAGER**
 - **WHEN YOU UPDATE, UPDATE ALL AIM PROGRAMS**
 - **CREATE AND STORES LAP AND SPLIT LOCATIONS**



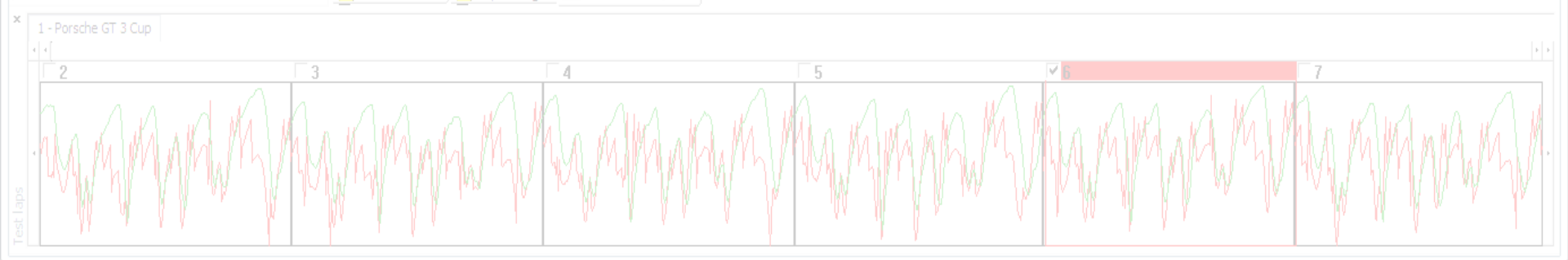


GPS MANAGER WHEN YOU HAVE A DEVICE CONNECTED, BUTTONS ARE AVAILABLE TO MOVE TRACK DATA TO AND FROM THE DEVICE AND THE PC. ALSO AVAILABLE ARE POWERFUL SELECTION, IMPORT, EXPORT, AND FILTERING CAPABILITIES.



RACE STUDIO 2

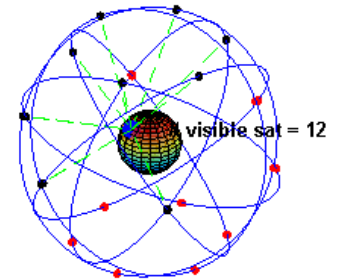
DATA TIP

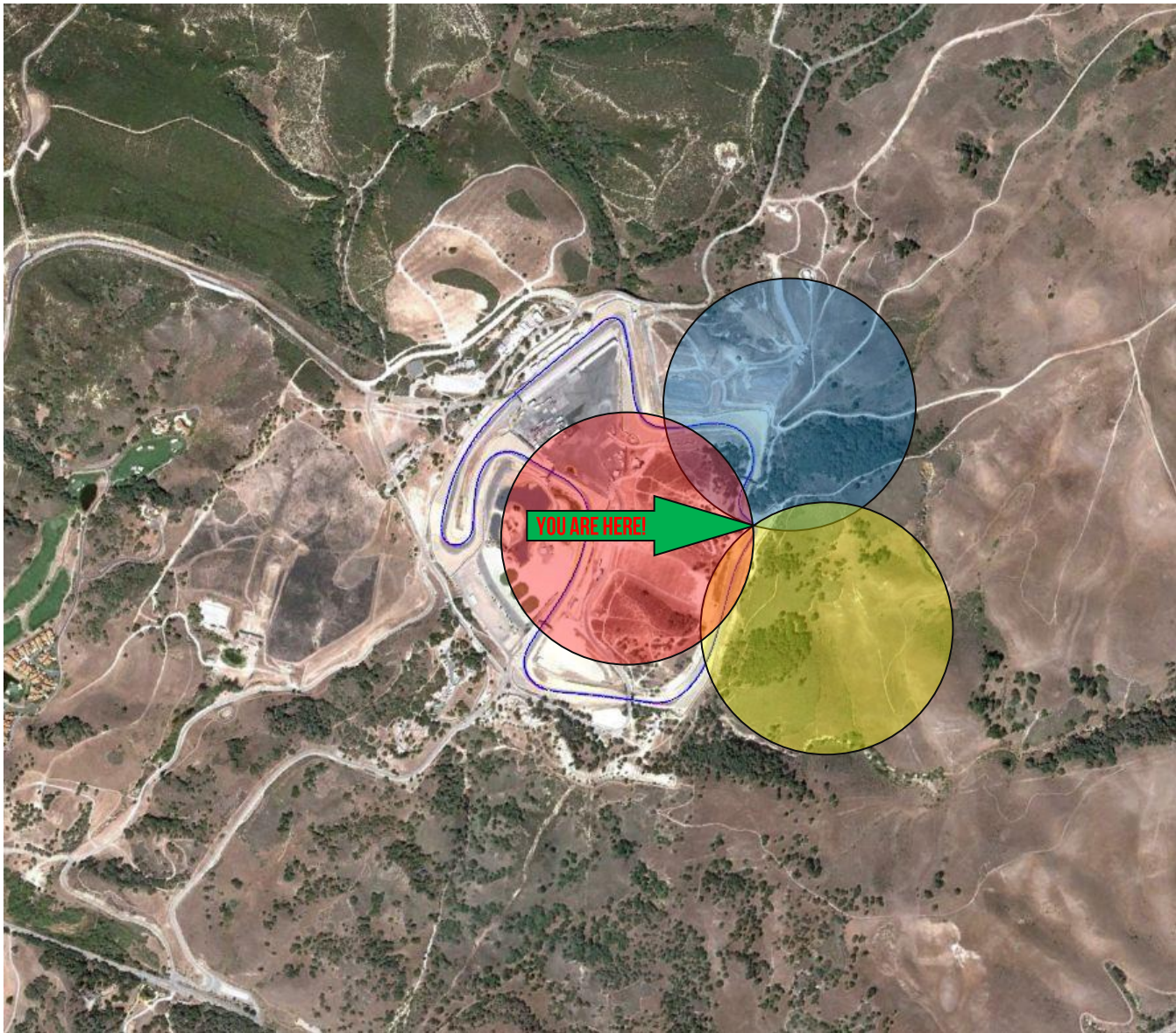




GPS SYSTEM INFORMATION:

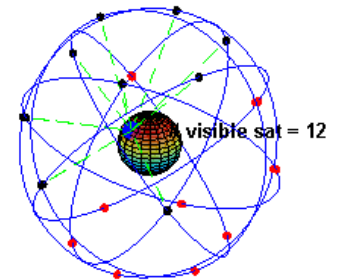
- 31 SATS CURRENTLY ORBITING
- 6 DIFFERENT ORBITAL PLANES
- EACH ORBIT IS 11HRS 58MIN
- MOVING AT ABOUT 7000MPH
- DESIGNED TO HAVE 9 SATS VISIBLE WORLDWIDE
- MIN 4 SATS NEEDED FOR GOOD 3D LOCATION, MORE IS BETTER
- APPX 12,000 MILE ORBIT
- TRANSMITTER POWER IS LESS THAN 50 WATTS!

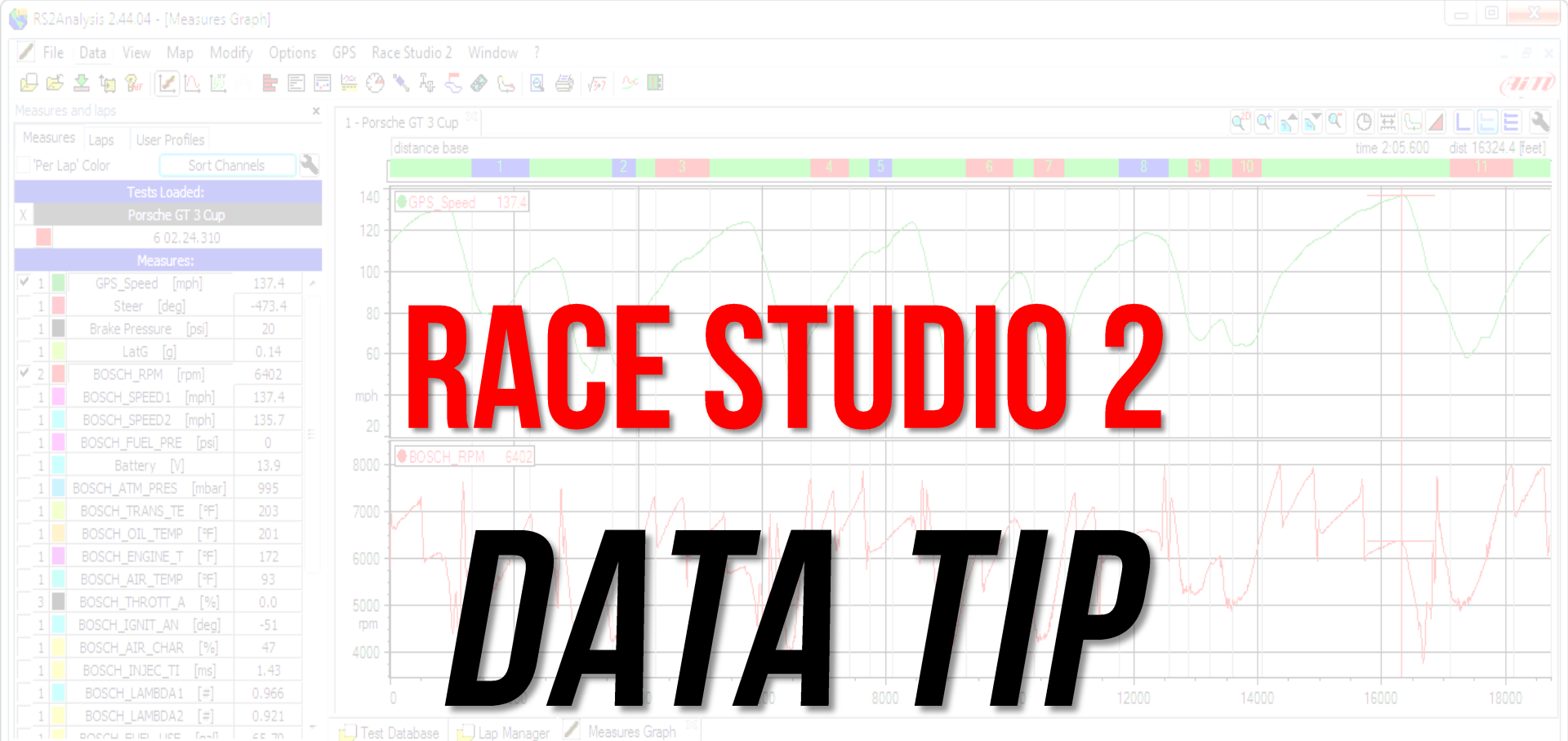




**TRILATERATION:
THE PROCESS OF DETERMINING
LOCATION BY THE MEASUREMENT OF
DISTANCES**

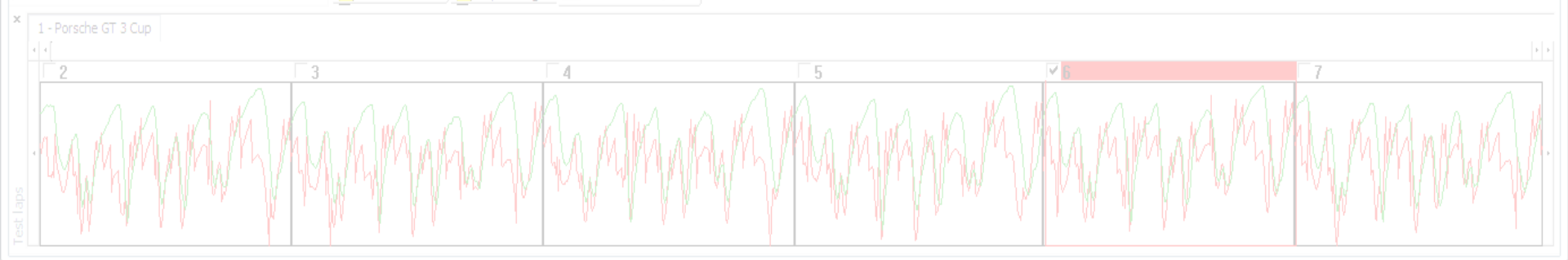
- GPS RECEIVERS CONSTANTLY RECEIVE AND ANALYZE RADIO SIGNALS
- CALCULATE THE PRECISE DISTANCE TO EACH SATELLITE
- 1 SATELLITE DETERMINES POSITION TO A LARGE AREA ON EARTH
- 2 SATELLITES NARROWS THE POSITION TO WHERE THEY OVERLAP
- 3 SATELLITES PROVIDES A FAIRLY ACCURATE POSITION
- 4 SATELLITES IS BETTER AND GIVE ELEVATION

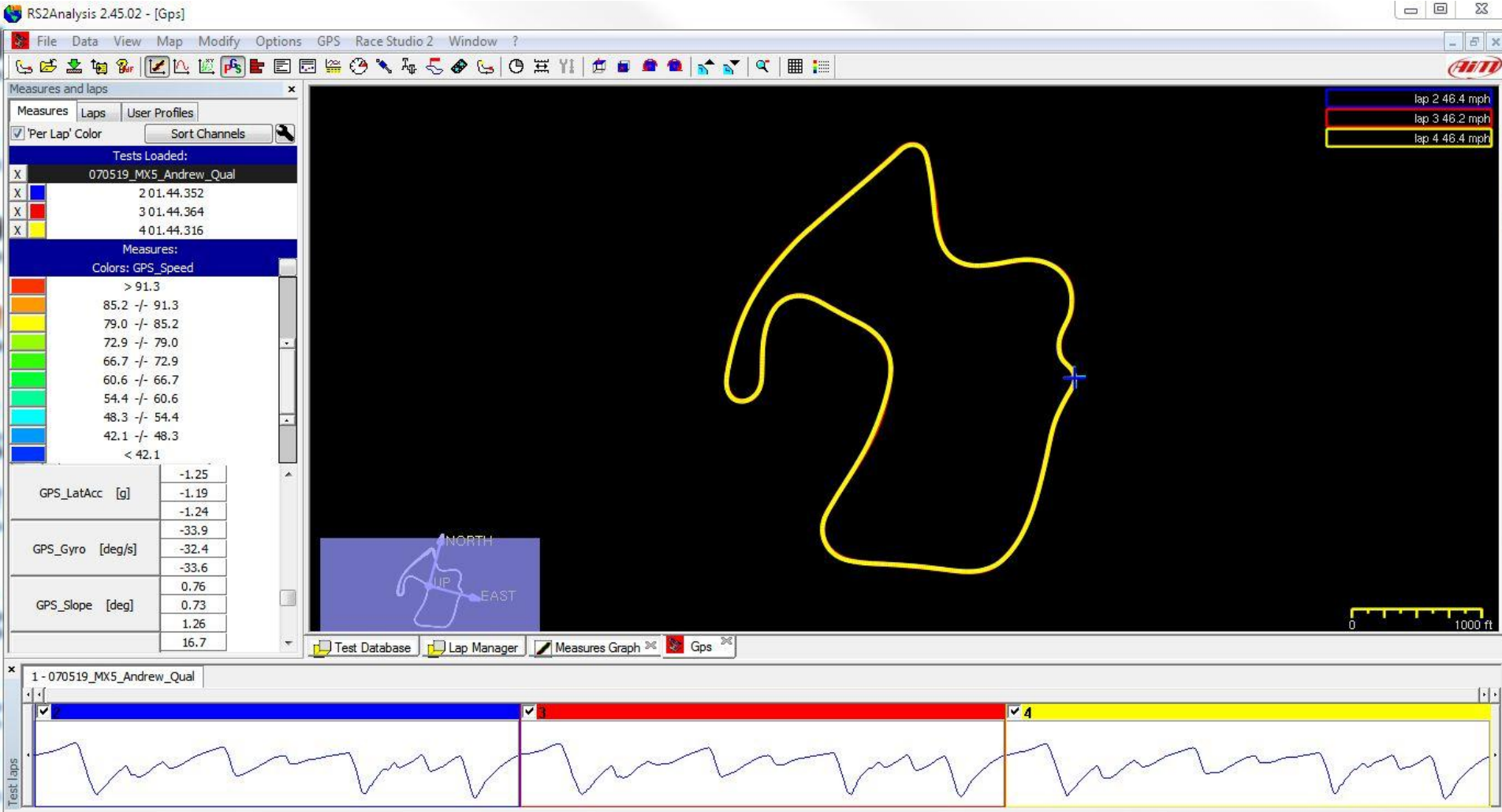




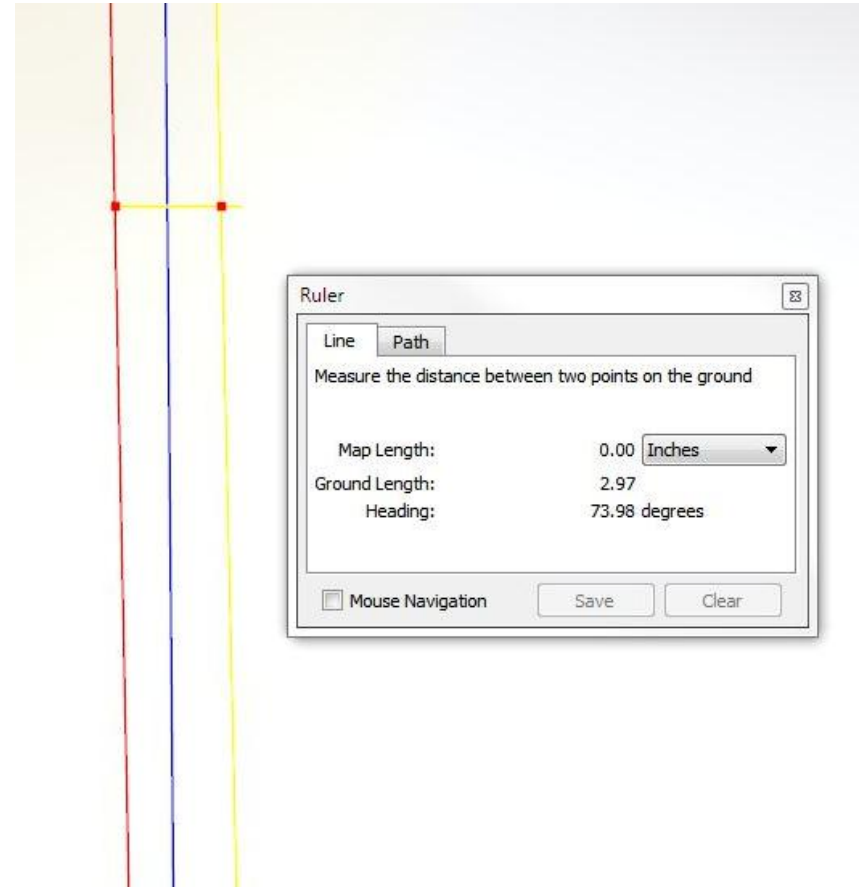
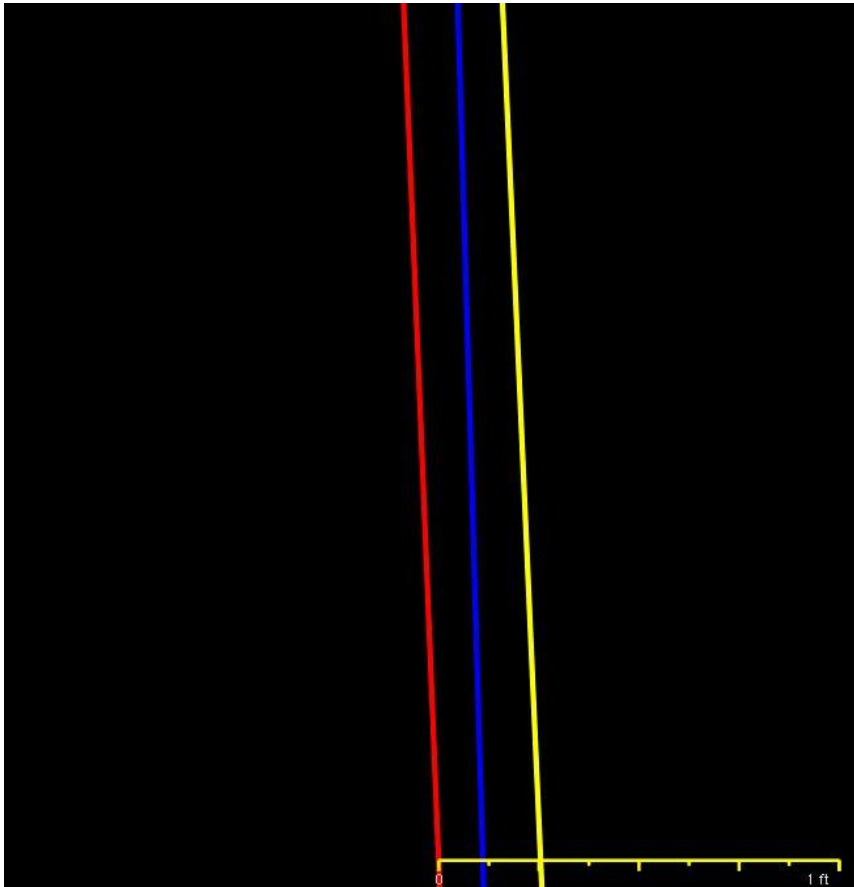
RACE STUDIO 2

DATA TIP





THIS IS THE DEFAULT VIEW IN THE RACE STUDIO 2 ANALYSIS SOFTWARE. THIS DATA IS A QUALIFYING SESSION WITH SAME 3 LAPS OF DATA WE HAVE LOOKED AT FOR THE LAST FEW SLIDES. NOW LETS ZOOM IN TO SEE THE ACCURACY/REPEATABILITY OF THE GPS DRIVEN LINE.



THE SAME DATA IN THE SAME LOCATION, THE ENTRY TO THE CORKSCREW AT MAZDA RACEWAY LAGUNA SECA. A SLOW SPOT WHERE THE DRIVER SHOULD BE HITTING THE SAME SPOT .
 THE IMAGE ON THE LEFT IS IN RACE STUDIO 2 ANALYSIS/GPS, ZOOMED IN AND WITH THE DATA RIGHT ON TOP OF THE SCALE BAR SHOWING A DIFFERENCE OF ABOUT 3"
 THE IMAGE ON THE RIGHT IS FROM GOOGLE EARTH AFTER A .KML EXPORT AND USING THE "RULER" TOOL SHOWS A DIFFERENCE OF 2.96"

- **WHEN CONSIDERING GPS ACCURACY, THERE ARE 2 TYPES:**

- **ABSOLUTE (OR POSITIONAL) ACCURACY**

- **THE ACCURACY WHEN COMPARING THE POSITION OF YOUR DRIVEN LINE OR LOCATION TO ANY OTHER DATA GATHERED AT ANY OTHER TIME.**
- **THIS IS REPORTED IN YOUR DATA AS “GPS_POSACCURACY”.**

GPS_Heading [deg]	10.7
GPS_Nsat [#]	10
GPS_PosAccuracy [m]	2.29
Battery [V]	14.5
Datalogger_Tem [°F]	97
Internal Batta [V]	4.25

- **RELATIVE ACCURACY**

- **THE ACCURACY WHEN COMPARING EACH DATA POINT AGAINST THE PREVIOUS DATA POINT**
- **THIS IS WHAT IS USED TO CALCULATE GPS_SPEED, GPS_LATACCEL, GPS_HEADING, ETC.**
- **THE RELATIVE ACCURACY OF YOUR AIM SPORTS GPS SYSTEM IS VERY GOOD**



Imagery Date: 9/29/2009 1998

**GOOGLE EARTH ACCURACY:
USING THE TIMELINE FUNCTION, HERE
ARE 3 LAPS OF DATA POSITIONED ON
GOOGLE EARTH MAPS FROM 1998
THRU 2009**

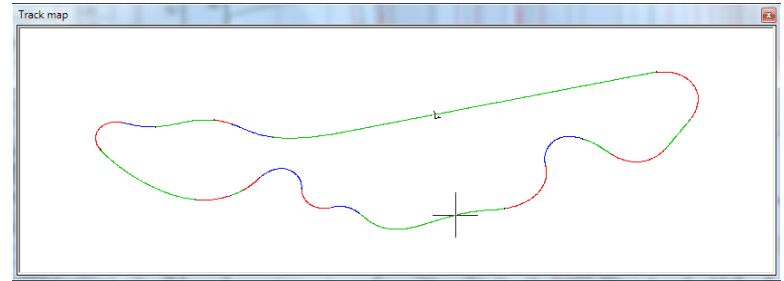
- **AUGUST 1998**
- **NOVEMBER 2005**
- **MAY 2007**
- **JULY 2007**
- **SEPTEMBER 2009**

**AS YOU CAN SEE, EVEN IN JUST THIS
ONE CORNER, THE ACCURACY OF THE
IMAGERY VARIES. BUT YOU CAN STILL
GET A GOOD IDEA OF THE DRIVING
LINES TAKEN FROM LAP TO LAP.**

- **TRACK MAPS**

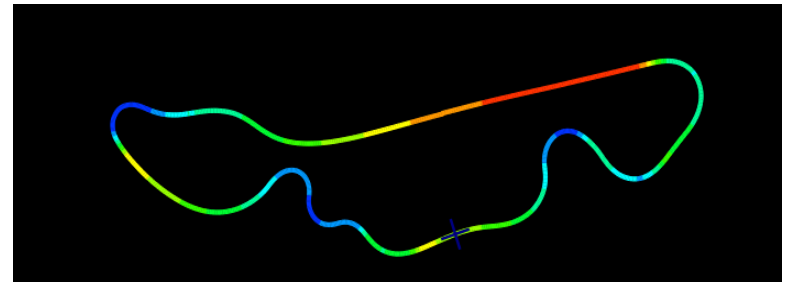
- **STANDARD TRACK MAP**

- **GENERATED BY ROLL OUT DISTANCE AND LATERAL ACCELERATION**
- **USED IN THE SPLIT REPORT AND TRACK REPORT**
- **JUST FOR TRACK LOCATION, NOT DRIVEN LINE**



- **GPS TRACK MAP**

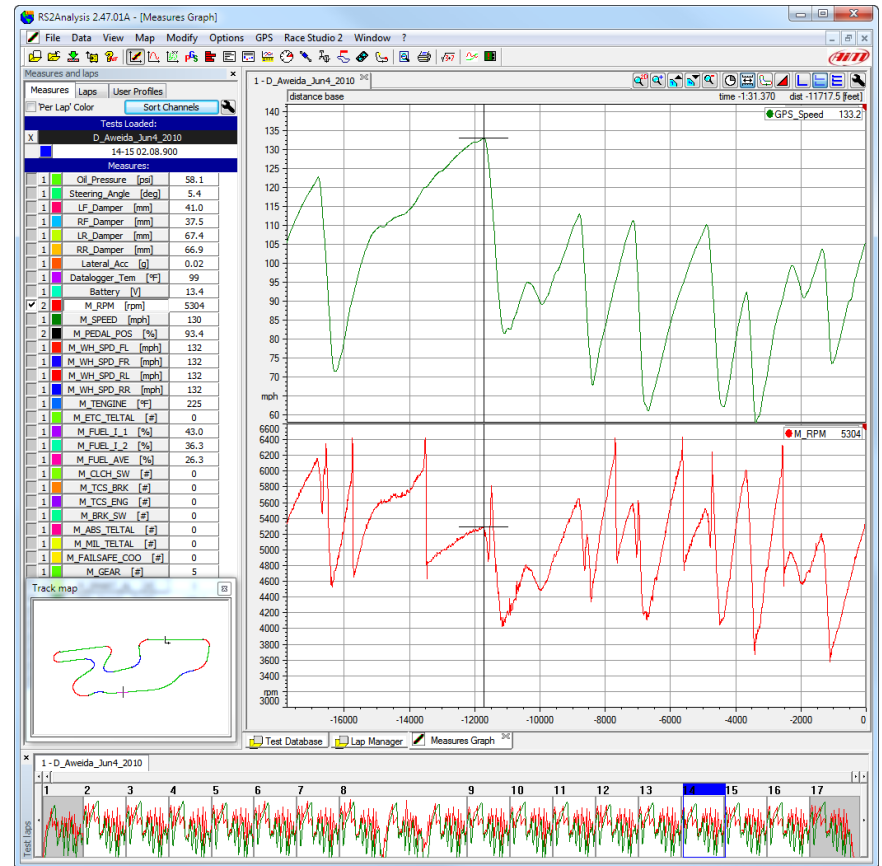
- **GENERATED BY THE GPS SENSOR**
- **ACTUAL DRIVEN LINE**
- **CAN BE COLORIZED BASED ON A CHANNEL**





Race Studio 2

RACE STUDIO 2 IS WHERE YOU PERFORM ALL OF THE CONFIGURATION AND PREPARATION STEPS BEFORE USING YOUR AIM SPORTS DATA SYSTEM TO GATHER DATA



Race Studio Analysis

RACE STUDIO 2 ANALYSIS MANAGES DATA FROM ALL AIM SPORTS DATA SYSTEMS. RACE STUDIO 2 WILL HELP IMPROVE THE VEHICLE AND DRIVER'S PERFORMANCE.



AIM

LEARN FAST™

**CONTACT INFO:
ROGER CADDELL**

ROGER@AIMSPORTS.COM

VIDEO: WWW.VIMEO.COM/AIMSPORTS/VIDEOS



www.aimsports.com

f facebook.com/aimsports
t twitter: @aimsports

1.800.718.9090

Dec 2012